

# PRESTON North End



**OFFICIAL MATCH PROGRAMME**  
League Division Three  
**PRESTON NORTH END**  
v  
**SWINDON TOWN**

Saturday, 6th February, 1982  
Kick-off 3 p.m.

35p



# Peachurst

## GUILDHALL TILE and BATHROOM CENTRE

STOCKTAKING

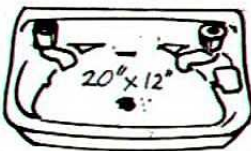
### WINTER SALE

#### SLIMLINE PANTHER CLOSET SETS



IN AUTUMN, SKY BLUE, & TURQUOISE ONLY  
**£35** PLUS  
 £5.25 VAT  
 \* SEAT EXTRA TO CHOICE

#### 500 WALL BASINS



(TAPS EXTRA)

LIMITED COLOUR RANGE

20" x 12"  
**£9.50**  
 PLUS  
 £1.43 VAT

#### BATH SHOWER SCREENS

TO \* CLEAR

**£26.00**  
 EACH  
 PLUS  
**£3.90**  
 VAT

#### SHOWER CUBICLES

BY CARRON

① WITH CURTAINS  
**£135** + £20.25  
 VAT

② WITH DOORS  
**£185**

+ £27.75  
 VAT

ANY COLOUR!

## INCREDIBLE BARGAINS = HUGE SAVINGS

30 ONLY!!

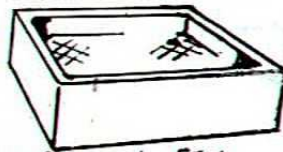
SKY BLUE CLOSE COUPLED CLOSET SETS

**£48** + £7.20  
 VAT  
 (SEAT EXTRA TO CHOICE)



#### SHOWER TRAYS

30" x 30" APPROX.



BEST QUALITY: **£29.50** + £4.43 VAT  
 FEW SECONDS: **£18.50** + £2.78 VAT

#### PAVAN VIT. CHINA VANITY BASINS



SKY BLUE, TURQUOISE & AUTUMN ONLY

TAPS EXTRA

**£18.50** + £2.78 VAT

#### CORNER BATHS

BUY DIRECT FROM THE MAKERS ANY COLOUR



4'8" x 4'8"

**£168.**

+ £25.20 VAT

## PEACHURST Ltd

Guildhall Arcade, Lancaster Road, Preston. Tel. 53762

Head Office: The Mill, Galgate, Nr. Lancaster. (0524) 751393

How to find us  
 TAKE THE ESCALATOR TO BIG VALUE

Up the escalator in the Arcade, turn left and make for the Car Park.

YOU CAN'T MISS US!



25" x 18" TO CLEAR

DENBIGH VIT. CHINA

BASIN AND PEDESTAL IN AUTUMN, SKY BLUE, SEPIA, AVOCADO PAMPUS & SORRENTO (Taps extra to choice)

**£25.** + £3.75 VAT

#### ACRYLIC VANITY BASINS

SKY BLUE & TURQUOISE ONLY



**£11.50** + £1.72 VAT  
 (TAPS EXTRA TO CHOICE).

#### BASIN SPLASH-BACKS

IN ANY COLOUR ONLY

**£13.50** + £2.02  
 VAT





**Preston North End  
F.C. Ltd.**

DEEPPALE, PRESTON PR1 6RU  
Tel: 795919

**President**

Tom Finney, O.B.E., J.P.

**Directors**

Alan R. W. Jones, J.P., F.R.I.C.S.

*(Chairman)*

Trevor J. Hemmings *(Vice-Chairman)*

Barney J. Campbell

Thomas W. S. Croft, F.C.I.O.B.

Thomas H. Gore

Edward Griffith, B.V.Sc., M.R.C.V.S.

Keith W. Leeming

M. Howard McCann, LL.B.

A. Cyril Pilkington, A.I.C.S., F.Inst.F.F.

**Vice-Presidents**

R. B. Bolton

T. F. Charnley

T. C. Nicholson, J.P., F.C.I.O.B.

**Manager**

Gordon Lee

**Assistant Manager**

Geoff Nulty

**Secretary**

Ronald E. Severs, F.I.M. Ent

**Commercial Manager**

David Bradshaw

**Hon. Medical Officer**

Dr. W. Niman

**League Champions**

1889 and 1890

**Div. Two Champions**

1904, 1913, 1951

**Div. Three Champions**

1971

**F. A. Cup Winners**

1889 and 1938

**Finalists**

1888, 1922, 1937, 1954, 1964

**Youth Cup Finalists**

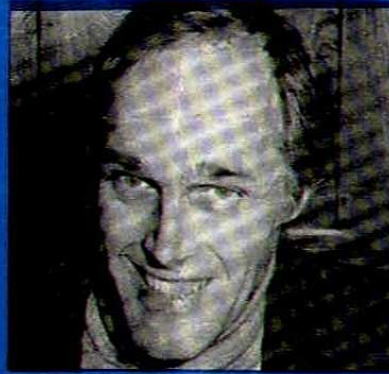
1960

**Programme Publishers**

K.B. Promotions

**Programme Printers**

Amblers, Preston.



# Lee's letter

**WE had a good win away at Gillingham last Saturday. We were against the wind in the first half, but a good goal from Willie Naughton lifted our confidence. Unfortunately John Anderson sustained a knee injury and eventually had to be substituted by John Kelly after half-time.**

**In the second half we controlled the game and another good goal from Alex Bruce put us two up.**

**The whole team performed very well, showing plenty of spirit.**

**On Tuesday night at Carlisle we were unlucky to lose, we played well and should have come away with something.**

**Today we meet Swindon Town, who lie just above us in the League with 26 points. It won't be an easy game, as we are both striving for points to move up the table.**

*Gordon Lee*



# Welcome to our visitors

## SWINDON TOWN F.C.

AFTER a narrow escape last season Swindon are currently striving to get away from the danger zone in Division Three and in fact it was as recently as last Saturday that our recent good run plunged them into the last three, only to climb above us again by beating Exeter on Sunday.

Some of their results this season such as the win at Gillingham in October not to mention the 4-0 win over us at their County Ground in September do, however, suggest that they are far too good a team to be in their current rather parlous position.

Certainly throughout their history they have often belied their league position by surprise performances in particular games. Whilst members of the Southern League they reached the semi-final of the F.A. Cup in both 1910 and 1912. They were then members of Division Three (South) throughout its existence from 1920 to 1958, surviving three re-election applications and pulling off the occasional F.A. Cup surprise such as 1951/2 when they beat First Division Stoke City and reached the last 16.

Such a feat, however, pales by comparison with that of 1968/9 when they won promotion from Division Three for the second time in their history and also won the Football League Cup beating Arsenal after extra time at Wembley. Those were the days of Don Rogers, Rod Thomas and present-day manager John Trollope the only player to have made 770 Football League appearances for one club.

A season later they reached their highest ever Football League position, fifth in Division Two and also won the Anglo-Italian Cup. In 1974, however, they slipped back to Division Three, since when they have had rather a fluctuating existence. In 1974/5 they just missed promotion; a year later they just escaped relegation; in 1978/9 and 1979/80 they mounted promotion bids only to fall away in the latter part of the season and in a tight finish to last season: they just stayed up by drawing their last game against Brentford.

### THIS SEASON

To see them struggling in their present league position it is difficult to believe that Swindon came within an ace of another Wembley appearance two years ago when they very unluckily lost to Wolves in the semi-final after putting out both Stoke and Arsenal en route.

In fact they began the present campaign very promisingly and lost only two of their first ten games, being unbeaten away from home until a 5-0 disaster at Walsall at the end of October. Since then, however, they have won only two league games up to the time of writing. An F.A. Cup run which brought them wins over Taunton and Suttin ended when they went down 2-1 after a great fight at Second Division front-runners Luton.

Goal power has been rather lacking in the last few months with former apprentice PAUL RIDEOUT and ex-Bristol City man HOWARD PRITCHARD doing their best to keep the flag flying up front.

In midfield ex-Hereford man ROY CARTER and GARY EMMANUEL (ex-Birmingham and Bristol Rovers) have also netted a few goals while BRIAN WILLIAMS (ex-Bury and Q.P.R.) and ROY GREENWOOD (ex-Hull, Sunderland and Derby) bring plenty of experience to this department.

In goal JIMMY ALLAN has played well over 300 games since coming down from Scotland. In front of him RUSSELL LEWIS is in his fourth season in the centre alongside long-serving KENNY STROUD with CHARLES HENRY in his second season in the right flank with KEVIN BADDELEY another ex-Bristol City man on the left.

Also in the running for places are young striker STEVE ABBLEY, ex-Bolton man MIKE GRAHAM and prolific striker ANDY ROWLAND, scorer of over 50 goals for the club and currently seeking a return to full fitness and top form.

TRY US —

C.A.V.

Main  
Agents

PRESTON

38583



THEN JUDGE US

OLDHAM

Main  
Agents

PRESTON

321777

We are your local specialists in Diesel Fuel Injection and Auto Electrical work, operating a fleet of service vans for ON-SITE work, at very competitive rates, and an AFTER HOURS BREAKDOWN

REPAIR SERVICE as well as a first class parts service for

S.U. BUTEC, AC-DELCO, LUCAS, BOSCH, BRYCE, HELLA, RUBBOLITE etc.

**LEYLAND AUTO ELECTRICAL AND DIESEL LTD.,**

UNITS 493/4, WALTON SUMMIT INDUSTRIAL ESTATE, BAMBER BRIDGE, PRESTON, LANCs  
Tel. Preston 38583 or 321777 (STD 0772)

24 Hour Ansafone Service





**SWINDON TOWN FOOTBALL CLUB 1981-82**

Back Row: left to right, Brian Hughes, Jimmy Allan, David Round, Mark Stevens, Kevin Baddeley.

Middle Row: Chris Kamara (now with Brentford), Roy Greenwood, Charlie Henry, Gary Emmanuel,  
Mike Graham, Roy Carter.

Front Row: Dave Peach (Captain), Andy Rowland, Steve Abley, Craig Moores, Paul Rideout, Kenny  
Stroud, Howard Pritchard, Russell Lewis, Martin Blackler.

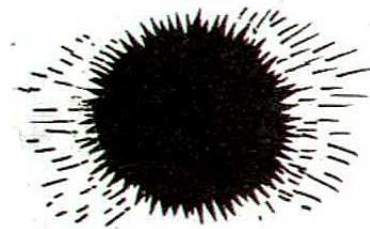
*Hire a Sunbed today and tan in your own home with.*

## **PRESTON SUNBED RENTALS**

It may be raining outside but with one of our sunbeds we guarantee sunshine on your own doorstep. It is now possible to have delivered one of our super high quality

**U.V.A. SUNBEDS** for only **£22 per week - unlimited hours - no extra to pay.**

**Call PRESTON 59689 - 24 hour answering service.**





**fiery jack**

*The Striker  
that  
always Scores*

when you get

LUMBAGO, NEURITIS,  
SCIATICA, FIBROSITIS,  
NEURALGIA, STIFF JOINTS,  
MUSCULAR ACHES  
AND PAINS

Make sure you see the match  
next week by using Fiery Jack  
Ointment available from  
chemists everywhere at 60p a  
tin.

## **AMBLERS PRINTERS**

(Established 1850)

*Programme printers for  
Preston North End F.C.*

Specialists in all types of  
printing work.

Chapel House,

St. Mary's Street,

Preston.  
Tel. 796100

## **20 YEARS AGO**

WE gained a useful 2-0 win at Brisbane Road on 9 February, 1962 against an Orient side that were the nearest challengers to Liverpool at the top of Division Two. This was a Friday evening fixture and our goals were netted by ALAN SPAVIN in the first half and JIM SMITH after the break. Teams:

**LEYTON ORIENT:** Robertson, Charlton, Lewis, Lucas, Bishop, Lea, White, Foster, Dunmore, Graham, McDonald.

**PRESTON:** Kelly, Cunningham, Ross, Wylie, Singleton, Smith, Wilson, Biggs, Alston, Spavin, Thompson.

Today's visitors Swindon drew 2-2 with Northampton, JOHN SMITH and BILL ATKINS getting their goals and they were now just below mid-table with Portsmouth and Bristol City both winning to strengthen their grip on the top two places.

## **10 YEARS AGO**

WE lost 2-0 here after a brave struggle in a fourth round F.A. Cup tie against Manchester United here on 5 February, 1972. In the opening few minutes HUGH McILMOYLE glanced a backheader just wide and in general we kept United from producing their normal flowing style in the first half. After the break however ALAN GOWLING netted twice to settle this Second v First Division contest. Teams:

**PRESTON:** Kelly, McMahon, Connor, Bird, McNab, Spavin, Heppolette, Spark, McIlmoyle, Lyall, Ingram.

**MANCHESTER UNITED:** Stepney, O'Neil, Burns, Gowling, James, Saddler, Morgan, Kidd, Charlton, Law, Best.  
Attendance 37,052.

The day's biggest sensation came at Hereford where the Southern League side enhanced their chances of gaining Football League status by beating Newcastle 2-1 in a twice postponed third round replay. What's more they pulled back from a half-time deficit to pull off this sensation.

Elsewhere ALAN DURBAN got a hat-trick as Derby put a peremptory end to Notts County's chances and BOB LATCHFORD's goal earned Second Division Birmingham a surprise win over Ipswich.

Swindon who were without a game after losing at home to Arsenal in round three were in mid-table in Division Two at the time and had in fact crashed 4-1 at Birmingham a week earlier.

**club profile**



## GARY BUCKLEY Forward

GARY joined Manchester City as an apprentice on 30th June, 1977, signing full professional on 13th March, 1978.

He made his Central League debut against Bolton Wanderers at Maine Road on 18th March, 1978, making 81 appearances plus 8 as substitute and scoring 22 goals.

His first team debut was at Maine Road against Spurs on 22nd October, 1980. Gary then played 4 League games plus 2 as substitute and 2 cup appearances before his transfer to North End on the 4th October, 1981.

To date Gary has made 9 League, 2 League Cup and one F.A. Cup appearance and has scored one goal.



FULL NAME: Gary Buckley  
 BIRTHPLACE: Manchester  
 BIRTH DATE: 3rd March, 1961  
 HEIGHT: 5 ft 5 ins  
 WEIGHT: 10 stone  
 PREVIOUS CLUB: None  
 MARRIED/CHILDREN: No  
 CAR: Ford Capri  
 FAVOURITE OTHER TEAM: Manchester City  
 MOST DIFFICULT OPPONENT: Couldn't name one in particular  
 MOST MEMORABLE MATCH: League Cup Semi-Final v Liverpool  
 MOST EXCITING MOMENT IN SOCCER: Debut v Spurs  
 BIGGEST DISAPPOINTMENT: Loosing the Semi-Final v Liverpool and missing the 1st Leg

BEST COUNTRY VISITED: Tenerife  
 FAVOURITE FOOD: Steak  
 MISCELLANEOUS LIKES: Most Sport, Driving  
 MISCELLANEOUS DISLIKES: Losing, Smoking  
 FAVOURITE TV SHOW: Most Sports Programmes, Rising Damp  
 FAVOURITE SINGER/GROUP: David Bowie, Rainbow  
 FAVOURITE ACTOR: Clint Eastwood  
 BEST FRIEND: I hope I have many  
 BIGGEST INFLUENCE ON CAREER: Coaching Staff at Maine Road, Dad, Ray Wheelan  
 PERSONAL AMBITION: To be successful  
 WHAT WOULD YOU HAVE LIKED TO BE IF NOT A FOOTBALLER: Never given much thought to being anything but a Pro footballer

## SINGLETON'S

*of Garstang  
for*

Quality Pork Pies  
and Sausage



TEL.  
0942 2132

## Tricentrol

BUILDERS MERCHANTS LTD

### Bathroom Suites

Showers & Surrounds  
Many Bathroom Accessories

### Kitchen Units

Self Assembly and Tailor Made

### Central Heating

Boilers, Radiators, plus a full  
range of ancillary items

### OPEN SIX DAYS A WEEK

Huge Stocks, Huge Savings, Free  
Delivery, Ample Parking Space

New Mill, Wesley Street,  
Bamber Bridge,  
Preston, PR5 6JH  
Telephone (0772) 37431



**For the Best  
Deals on  
Wheels —**

CONTACT...

**GLANDEN MOTORS**

**NOW**

**YOUR NEW**

**PEUGEOT TALBOT**

**DEALER**

**FOR PRESTON . . .**



Opening Hours:  
Monday to Friday 9-6.  
Saturday 9-5. Sunday 11-4.



**382 Blackpool Road, Preston.  
Telephone 728551.**

# Money Talks



Commercial Manager:  
DAVID BRADSHAW

## SIGN ON FOR P.N.E.

AT a time when football economics are being discussed in the national press, we at North End are doing our utmost to ensure the long life of Football at Deepdale.

One of the ways in which we are "tackling" this problem, is through our Lottery.

During the coming weeks we will be launching a new six game lottery ticket and we ask you for extra support by "signing on" for North End, and selling our tickets.

With the new ticket comes an agents weekly cash draw, plus a grand draw later in the year, which will be a holiday for 2 in Florida, U.S.A.

Please help us by "signing on for Preston North End" just ring:

**PRESTON 795465 or 795156**



The latest £2,000 Jackpot Draw

Winner is:

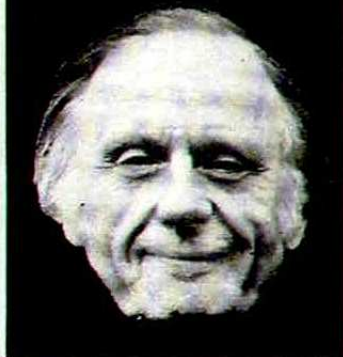
**CAROLE ASHTON  
95 GREENWOOD  
CLAYTON GREEN  
PRESTON.**





# DEEPDALE DIARY

## RON SEVERS Column



SO much seems to have happened at Deepdale this season that it is hard to believe last Tuesday's game at Carlisle was only the halfway mark in the 1981/82 Fixture List, 23 played, 23 to go.

Briefly mentioning the gloom and despondency generated by the desperate financial situation facing many Clubs like Bristol City, Darlington, Derby and Wolves provides little comfort to us the supporters, and perhaps less to the Players, Managers, and Directors "Behind the Scenes".

What about a spot of Deepdale nostalgia to lift our spirits and aspirations? Let's get the fans here singing "Margie", the one time North End signature song again.

If someone will lend us their recording - contact the Office on PRESTON 795919 - we'll print the words in the Programme for those whose memory doesn't go back to the great days. So please check your Record stock!

"Sing-a-long-a-Deepdale" could be a bigger success than "Land of Hope and Glory" on the last night of the Proms - or singing the current Top Twenty hits in the bath.

### SUPPORTERS CLUB NOTES

#### General Meetings

There was a Sports Quiz contest against Blackburn Rovers Supporters Club on 20th January, with Mike Dryland and Neil Farnworth of the Lancashire Evening Post kindly acting as Question Master and Scorer. We were represented by Keith Allen, Gail Armstrong, Andy Borrill, Aïex Bruce, Bill Rawlinson, Peter Sayer, Andy Tallentire, Andy and Dave Wilson. Unfortunately the trophy, donated by G. and S. Imperial Decor, was taken back to Ewood, but we hope to get our revenge next year.

The next General Meeting will be in the Sponsors Lounge on Wednesday, 17th February at 7-30 p.m. Mr. Tom Finney will be our guest speaker.

#### Pool and Darts Championship

The first round will take place on Tuesday, 23rd February at the New Britannia Inn, Heatley Street. Entry forms are available from M. Robinson (50594) and should be returned, with 50p entry fee, by 17th February.

#### Away Travel

The price for Huddersfield on 9th February will be £2.60 (age 16 and under £2.00). The coach will leave Leyland at 5-00 p.m. and Preston at 5-30 p.m. The price for Bristol Rovers on 13th February will be £6.00 (age 16 and under £5.00). Bookings will be taken by the Lowthorpe Road Ticket Office; Fishwick's Golden Hill Garage, Leyland; S. Ainscough, 18 St. Mary's Road, Bamber Bridge (34370); S. Chadwick, 48 Barry Avenue, Ingol (724603); J. Falconer, 9 Leyland Road, Penwortham; M. Robinson, 90 Brackenbury Road (50594).



DATSUN CHERRY  
3 DOOR G.L.  
£2578.02 Ex-Works  
Inc. Car Tax & V.A.T.

CHOOSE **DATSUN** DEPENDABILITY

*A WINNER EVERY TIME*

**No. 1 for Quality,  
Reliability & Economy  
IMMEDIATE DELIVERY**

**FRED COUPE LTD**



Chorley Rd., Walton-le-Dale - Tel. Preston 53911-2-3-4



# North End in focus

## Action Against Millwall

Steve Elliott slots home Preston's winner from the penalty spot.

1. Bruce fires a shot goalwards with the 'keeper beaten . . . .

2. . . . but sinks in despair as the ball went over the bar.

Elliott goes for a 50-50 ball with the Millwall 'keeper.

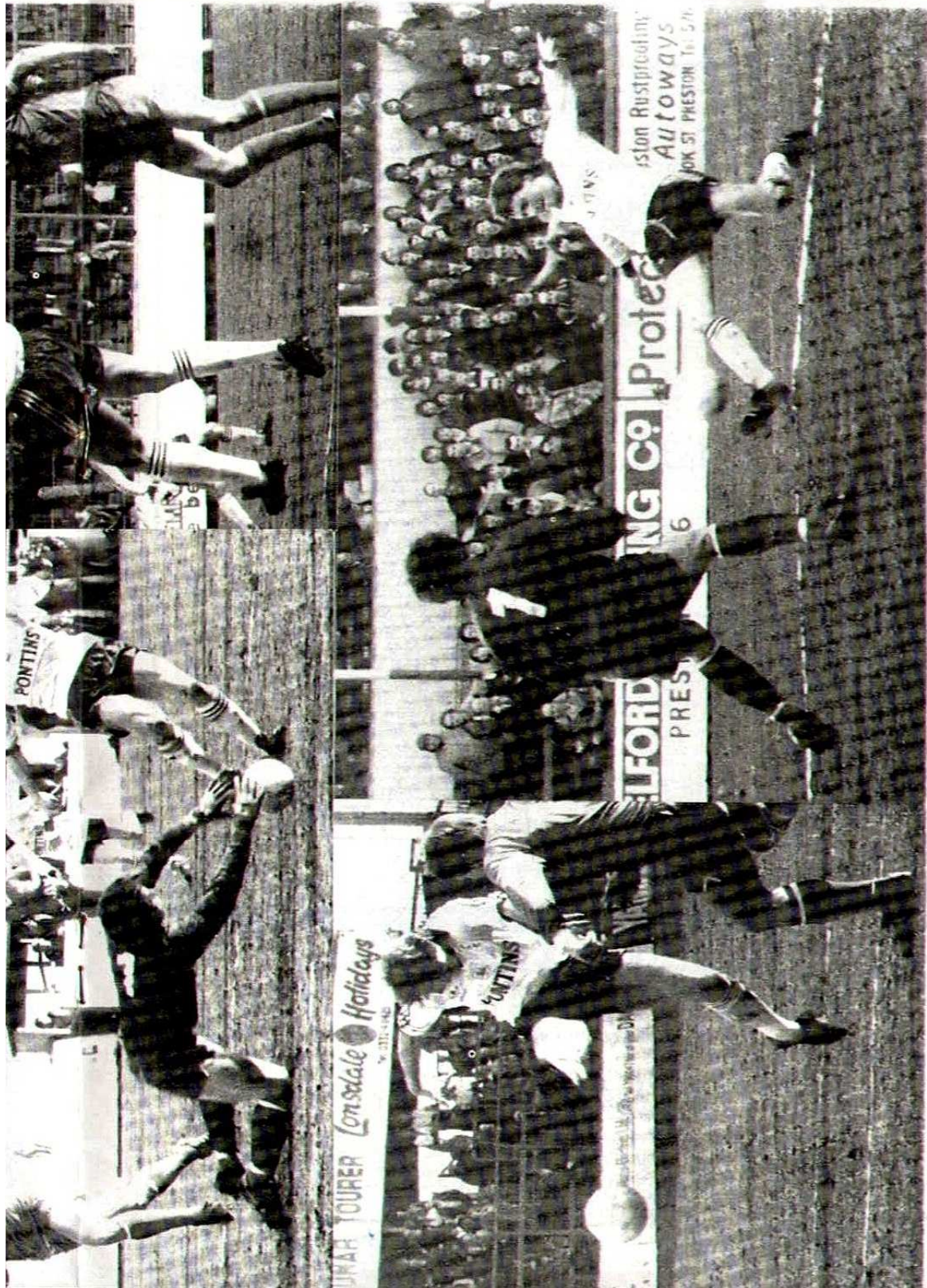
Don O'Riordan joins the attack, but his header went wide.

John Anderson contorts himself to get a strike in.

Graham Bell at full stretch in a goal attempt.







**R. B. WADE  
& CO. LTD.**

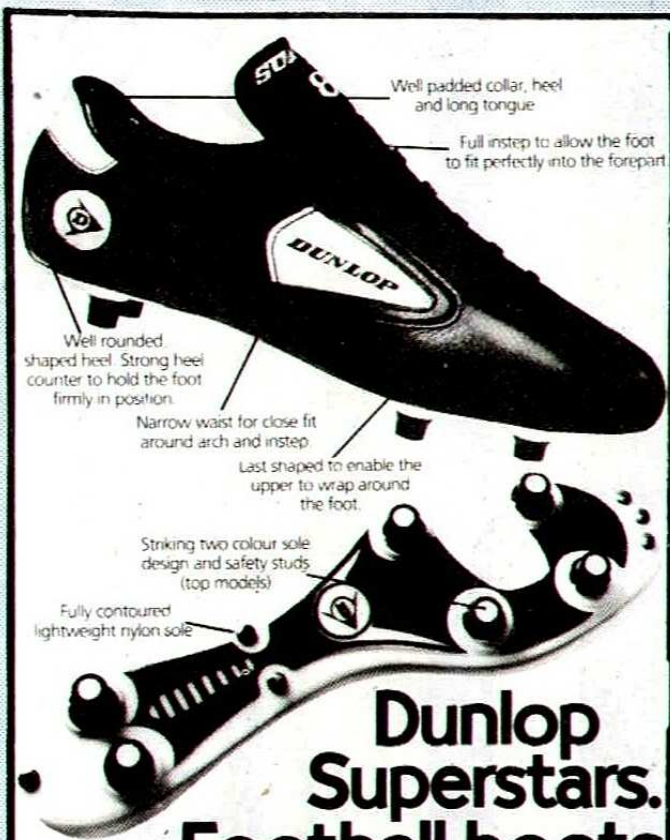
**B.I.B.A. BROKERS**  
*Insurance brokers to*  
**Preston North End**  
*Football Club*  
*Head Office:*  
**143 CHURCH STREET**  
**PRESTON**  
 Telephone: Preston 21611



ALSO AT  
 20 St. Thomas Road, Chorley  
 Tel. Chorley 76054  
 90 Hough Lane, Leyland  
 Tel. Leyland 22253  
 17 Railway Road, Darwen  
 Tel. Darwen 72123  
 3 Rainhill Road, Barnoldswick  
 Tel. Barnoldswick 2131  
**FOR SERVICE**

**R. B. WADE  
& CO. LTD.**





## Dunlop Superstars. Football boots inspired by professionals.

Dunlop Superstars® are Preston North End's choice of football boots. It's not hard to see why.

They're top quality, lightweight and built to professional standards.

Yet you can get your hands on a pair for £11.95 with a Pro boot for under £30. Trainers start at only £8.99.

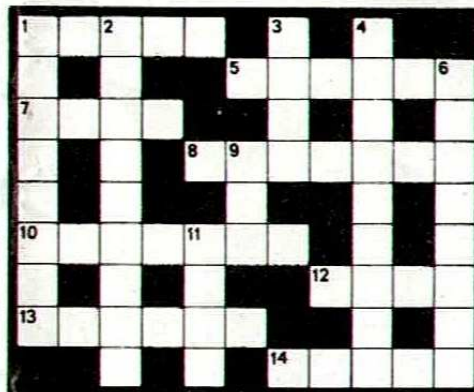
The new Dunlop range. They'll bring out the professional in you.

**DUNLOP FOOTWEAR**  
DUNLOP FOOTWEAR LIMITED, A SUBSIDIARY OF DUNLOP HOLDINGS LTD. REGISTERED TRADE MARK.

## Soccer 99 Crossword

Compiled by David Peck

ANSWERS



### Across

- 1 & 5. Midfielder who played his 200th League towards the end of last season whilst with Swindon and subsequently rejoined his first club, Portsmouth (5,6)  
7. Surname of the Roy of the Rovers (4)  
8. One of England's million-pound men (7)  
10. Not the thing to show the referee! (7)  
12. Brentford's nickname (4)  
13. Popular, small centre-forward who spent his whole career with Hamburg and was for a while West Germany's caps and goals record-holder (6)  
14. \_\_\_\_\_ Park is where Stranraer are (5)

### Down

1. Former Manchester City and Aston Villa midfielder who went to Wrexham in 1979 (8)  
2. In 1970 (their first season) \_\_\_\_\_ Lancers ended as NASL champions ... in 1980 they just ended (9)  
3. Formerly with Luton, he played his 100th League game for Lincoln this season (4)  
4. Irish League club which won the Irish Cup and the Ulster Cup last season (9)  
6. One who reports on the referee (8)  
9. \_\_\_\_\_ Pearson has played for Plymouth, Millwall and Exeter (3)  
11. Forward who completed a ton of turn-outs for Wolves this season (4)

- 1 & 5. Chris Kamara  
Across  
1. Carrodus  
2. Rochester  
3. Carr  
4. Ballymena  
6. assessor  
9. Ian  
11. Eves  
Down  
7. Race  
8. Birtles  
10. dissent  
12. Bees  
13. Seeler  
14. Stair

## North End on the move



### YOUR RAC ROUTE TO HUDDERSFIELD TOWN

Tuesday, 9th February, 1982

#### PRESTON

(Join M6 at intersection 31, Samlesbury, junction with A59).  
M6/M61/M62 (follow Manchester then Huddersfield signs) to  
intersection 23 junction with A640 46 miles  
A640 to Huddersfield 50 miles

Entering Huddersfield on the A640 turn left at Castlegate on  
the inner ring road. Keep with the ring road for half a mile then  
turn left into Leeds Road. Huddersfield Town A.F.C. ground is  
on your right in half a mile.





*Our head office in Winckley Square*

## **A complete Insurance Planning Service**

Among people concerned with insurance, the name Garratt, Son & Flowerdew Limited is known in many parts of Britain and Europe.

From our Head Office in Preston, as Lloyd's Brokers, we offer a complete Insurance Planning Service to both our private and commercial clients.

This is not an 'off-the-peg' service but it is tailored to meet the complex requirements of

industry and commerce, as well as the individual needs of a private policy holder.

We have just celebrated 100 years as insurance brokers and our position today, as one of the leading firms of brokers in the north of England, is a result of our professionalism, our depth of service and our determination to provide the right answer to every insurance situation.



# **Garratt, Son & Flowerdew Limited**

INSURANCE BROKERS AND AT LLOYD'S

HEAD OFFICE: 7 WINCKLEY SQUARE, PRESTON PR1 3JD Telephone: 0772 51841 Telex: 67648



# Stat Check

PRESTON NORTH END Season 1981/82

## FIRST TEAM FIXTURES

Day	Date	Opponent	F	A	Att.
Sat	Aug 15	Blackpool (Group Cup)	2-1		6,102
Tues	Aug 18	Burnley (Group Cup)	0-1		5,292
Sat	Aug 22	Carlisle United (Group Cup)	0-3		3,026
Sat	Aug 29	Millwall	1-2		4,549
Tues	Sept 1	Halifax Town (FLC 1R 1L)	2-1		2,719
Sat	Sept 5	Portsmouth	1-0		6,124
Sat	Sept 12	Swindon Town	0-4		5,695
Tues	Sept 15	Halifax Town (FLC 1R 2L)	0-0		4,090
Sat	Sept 19	Gillingham	1-1		4,563
Tues	Sept 22	Huddersfield Town	1-1		6,497
Sat	Sept 26	Newport County	1-1		5,064
Tues	Sept 29	Doncaster Rovers	0-1		7,513
Sat	Oct 3	Bristol Rovers	0-1		4,964
Tues	Oct 6	Leicester Cup 2 (1L)	1-0		5,592
Sat	Oct 10	Bristol City	0-0		5,389
Sat	Oct 17	Reading	0-0		5,671
Tues	Oct 20	Burnley	1-1		7,521
Sat	Oct 24	Exeter City	3-4		3,642
Wed	Oct 28	Leicester 2 (2L)	0-4		7,658
Sat	Oct 31	Southend United	1-0		4,487
Wed	Nov 4	Lincoln City	2-1		3,683
Sat	Nov 7	Chester	0-1		5,185
Wed	Nov 11	League Cup 3			
Sat	Nov 14	Wimbledon	2-3		2,428
Sat	Nov 21	Chesterfield FA Cup 1	1-4		5,435
Sat	Nov 28	Oxford United	0-3		3,798
Wed	Dec 2	League Cup 4			
Sat	Dec 5	Brentford	1-3		4,171
Sat	Jan 2	Chesterfield	0-0		3,969
Wed	Jan 13	League Cup 5			
Sat	Jan 16	Plymouth Argyle	1-0		4,936
Sat	Jan 23	Millwall (4)	1-0		5,082
Sat	Jan 30	Gillingham	2-0		5,379
Tues	Feb 2	Carlisle	0-1		5,044
Sat	Feb 6	Swindon Town			
Tues	Feb 9	Huddersfield Town (LCSF 2)			
Sat	Feb 13	Bristol Rovers (5)			
Sat	Feb 20	Doncaster Rovers			
Sat	Feb 27	Bristol City			
Sat	Mar 6	Reading (6)			
Tues	Mar 9	Burnley			
Sat	Mar 13	Exeter City (LCF)			
Tues	Mar 16	Lincoln City			
Fri	Mar 19	Southend United			
Tues	Mar 23	Fulham			
Sat	Mar 27	Chester			
Sat	Apr 3	Wimbledon (SF)			
Tues	Apr 6	Portsmouth			
Sat	Apr 10	Carlisle United			
Tues	Apr 13	Walsall			
Sat	Apr 17	Brentford			
Sat	Apr 24	Oxford United			
Tues	Apr 27	Walsall			
Sat	May 1	Plymouth Argyle			
Tues	May 4	Newport County			
Sat	May 8	Chesterfield			
Sat	May 15	Fulham			
Sat	May 22	FA Cup Final			

Home Fixtures in **Bold**

## CENTRAL LEAGUE FIXTURES

Day	Date	Opponents	F	A
Sat	Aug 29	Huddersfield Town	2-0	
Wed	Sept 2	Blackburn Rovers	2-1	
Sat	Sept 5	Manchester City	2-3	
Sat	Sept 12	Newcastle United	4-1	
Sat	Sept 19	Nottingham Forest	1-2	
Sat	Sept 26	Aston Villa	2-5	
Wed	Sept 30	DERBY COUNTY	0-4	
Sat	Oct 3	Everton	2-4	
Sat	Oct 10	West Bromwich Albion	2-1	
Sat	Oct 17	Sheffield Wednesday	4-1	
Sat	Oct 24	Stoke City	2-2	
Sat	Oct 31	Bolton Wanderers	1-2	
Tues	Nov 17	Sheffield United	1-0	
Tues	Nov 24	Blackburn Rovers	4-3	
Sat	Nov 28	Wolverhampton Wanderers	2-4	
Tues	Dec 1	Coventry City	1-2	
Sat	Dec 5	Manchester United	2-3	
Sat	Jan 2	Leeds United	3-1	
Sat	Jan 16	Huddersfield Town	0-1	
Sat	Jan 30	Nottingham Forest	0-2	
Wed	Feb 3	Bury	3-1	
Sat	Feb 6	Newcastle United		
Wed	Feb 10	Sheffield United		
Sat	Feb 13	Everton		
Sat	Feb 20	Aston Villa		
Tues	Feb 23	Coventry City		
Sat	Feb 27	West Bromwich Albion		
Sat	Mar 6	Sheffield Wednesday		
Sat	Mar 13	Stoke City		
Sat	Mar 20	Bolton Wanderers		
Sat	Mar 27	Burnley		
Sat	Apr 3	Blackpool		
Sat	Apr 10	Bury		
Wed	Apr 14	Blackpool		
Tues	Apr 20	Burnley		
Sat	Apr 24	Wolverhampton Wanderers		
Sat	May 1	Manchester United		
Wed	May 5	Derby County		
Sat	May 8	Leeds United		
Sat	May 15	Liverpool		

To be arranged

Manchester City (Home) Liverpool (Away)

### YOUR RAC ROUTE TO BRISTOL ROVERS

Saturday, 13th February, 1982

#### PRESTON

Join M6 at most convenient intersection  
(NOTE: Mileages start at intersection 31, Samlesbury)

M6 south then M5 (follow 'South West' signs)  
to intersection 15 (Patchway) junction with  
M4 161 miles

M4 (follow 'London' then 'Bristol North' signs)  
to intersection 19, junction with M32

164 miles

M32 to Eastville, Bristol 167 miles

Leaving M32 take first exit on left, then, after  
300 yards, turn right into Fishponds Road.  
Keep straight on at traffic lights then take  
second right to Bristol Rovers A.F.C. ground at  
Bristol Stadium.



# SOUVENIR SPECIALS

Cuddly SNOOPY or TEDDY (Club colours)	£2 each or both for £3.50
T Shirts, V neck, white with N/Blue edging	£2.00
Sweatshirts	£5.00
PNE Holdalls, unbeatable value at	£5.00
Club Ties. Exclusive to PNE	£4.00
PNE Scarves from as little as	£1.00 up to £3.00
Real Leather Footballs (with adaptor) excellent value	£5.00
Cushions	£1.00
Rulers, ideal for school, exclusive to PNE	50p
Tea Towels	50p
Mugs	80p
Centenary Pens	50p
Centenary Rosettes (limited quantity)	85p

All goods available at the  
**PNE SOUVENIR SHOP**

situated in the West Stand facing the Car Park.  
Open only on Matchdays between 2 p.m. and 3 p.m.  
also some goods available from the Kiosk by the  
Players entrance on Lowthorpe Road.

Postal Orders accepted - please allow P & P.  
Apply in writing please to Preston North End  
Commercial Department, Lowthorpe Road, Preston.  
Tel. 795465/795156

## Don't Forget Your North End LOTTERY TICKETS

### Div 3

	P	W	D	L	F	A	Pts
Chesterfield	23	12	5	6	31	16	41
Fulham	22	12	5	5	36	24	41
Carlisle	21	13	2	6	30	21	41
Southend	23	11	5	7	31	24	38
Reading	24	10	7	8	33	36	36
Walsall	22	10	5	7	31	21	35
Bristol R	26	9	7	9	30	33	34
Millwall	22	9	5	8	30	26	32
Burnley	22	8	8	6	29	29	32
Oxford	20	9	4	7	27	23	31
Plymouth	25	8	7	10	31	30	31
Brentford	24	9	4	11	23	25	31
Huddersfield	22	8	6	8	27	24	30
Gillingham	22	9	3	10	29	33	30
Doncaster	21	8	5	8	27	28	29
Exeter	22	8	5	9	39	45	29
Newport	24	7	7	10	29	30	28
Lincoln	21	7	6	8	30	26	27
Swindon	22	7	5	10	28	35	26
Portsmouth	23	5	10	8	24	27	25
Preston	23	6	7	10	19	28	25
Bristol City	22	5	8	9	20	27	23
Chester	22	5	8	9	19	29	23
Wimbledon	21	5	5	11	26	39	20

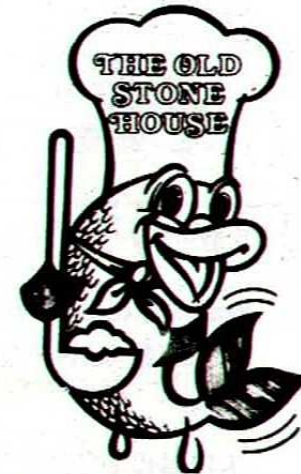
### FIRST TEAM APPEARANCES 1981/82

	League	Goals
Litchfield	18	
Bruce	23	8
Clark	18	
O'Riordan	23	1
Coleman	15	
Houston	10	
McAteer	20	
Anderson	17	
Doyle	19	2
Farrelly	7	
McGee	4	
Naughton	12	2
Taylor	9	
Elliott	12	2
Westwell	4	
Bell	7	
Booth	12	
Buckley	9	1
Dunn	8	1
Kelly	7	
Hodge	5	
Sayer	1	
Own Goals	1	



### Eating Establishment

Open Monday to Saturday  
12 noon to 3 p.m. - 6 p.m. to 11-30 p.m.  
Sunday 12 noon to 10-30 p.m.  
ST. MICHAEL'S ROAD, BILSBORROW,  
Nr. PRESTON.  
Tel. (0995) 40010-40020



Open Monday to Friday  
12 noon to 2-30 p.m. - 7 p.m. 11-15 p.m.  
Saturday  
12 noon to 2-30 p.m. - 6 p.m. to 11-30  
Sunday 12 noon to 10-30 p.m.  
MITTON ROAD, MITTON, WHALLEY.  
Tel. Storeyhurst 0254-86-544

We are here for people like you who  
enjoy eating good food in a relaxed  
informal atmosphere, we love to see  
children and have a special menu  
just for them.

No bookings necessary.  
Rooms available for Private Functions  
and Business Meetings.  
just give us a call



## CAR SPARES A PROBLEM?

Contact

## LONGTON MOTOR SALVAGE



MOT Failures, Damaged Cars Always Required

We keep spares for nearly every type of car, old and new models

We stay open Mon to Sat, 9 am to 5 pm

**WE AIM FOR A FRIENDLY,  
HELPFUL SERVICE**

Call or phone

## LONGTON MOTOR SALVAGE

HALL LANE  
LONGTON G12294

## SMITHS INTERNATIONAL

Local &  
Long Distance  
Removal  
Contractors

Leyland 23059  
(24 Hour Service)  
14 SANDY LANE,  
LEYLAND.



# THIRD DIVISION SCENE

by Geoff Allman

OUR current run of three successive wins is our best since March and April 1980 when we beat Notts County, Leicester and Shrewsbury in successive Second Division games. This run is particularly remarkable in that it follows hard upon five successive defeats in league and cup games.

The last time that we equalled a run of four games without conceding a goal we have to go back to September 1977 when after three successive goalless draws we beat Cambridge 2-0 in what turned out to be our promotion season from Division Three.

Also on the crest of a wave at the moment are Oxford United, who in successive Saturday's have won 3-0 at First Division Brighton in the F.A. Cup and 3-1 at Walsall in Division Three. Saturday's game was the first in which they have scored as many as three goals in a league game since they won 3-0 on the same ground last March. To add to the coincidence both KEITH CASSELLS and PETER FOLEY netted on Saturday just as they did in the corresponding game at Walsall last season and at Brighton a week earlier.

Another team currently in good form are Southend, who since their shock F.A. Cup defeat at Fourth Division Hereford have been unbeaten in six league games and are now challenging for promotion for the second season in succession and a place in Division Two for the first time in their history. On Saturday their goalless draw at Portsmouth left the home side with a record of 3 goalless draws in their last six league games. The gate for this game was 7,731, Portsmouth's lowest home gate since the end of the 1978/9 season though at a number fewer than 16 other Third Division grounds it would have been the highest gate of the season.

Currently hitting a lean patch Brentford have just lost five games in a row without scoring a single goal, going down 1-0 at Plymouth on Saturday on a ground where they had won on each of their last two visits. They are now below Argyle in the table - an illustration of how quickly fortunes can change for after the first two months of this season the Bees were in the promotion hunt and Argyle in a relegation spot.

Talking about relegation spots Wimbledon are currently making determined efforts to hand over the wooden spoon. After failing to win any of their first nine away games they have just won successive games at Bristol City and Doncaster by 3-1 margins. Oddly enough this game is the only one in the Football League that City have lost since the turn of the year as they battle away despite their financial problems.

Finally what price Burnley for a shock promotion bid. Despite their wretched start to the season they have now played 13 successive league games without defeat and on Saturday STEVE TAYLOR's two goals earned them a win at Huddersfield against a side unbeaten since early November.



# JUNIOR Soccer

## DEEPPDALE JUNIORS

DEEPPDALE Juniors Under 15 and Under 14's still maintain their 100% record this season. We welcome George Glover, Sean Ward and Stephen Nuttal who have all signed associate schoolboy forms.

## SCHOOLS SOCCER

### English Schools F.A. Associated Biscuits Trophy (Under 16's)

Preston's representatives. St. John Fisher lost 3-2 after extra time to St. Theodore's Burnley in one Lancashire final and South Ribble's Priory High lost 4-1 to Leyland/Chorley's Wellfield.

### Lancashire Schools F.A. Open Cup (Under 16) - 2nd Round

William Temple 2 v Warbreck High, Blackpool 1 winners play Wellfield, Leyland

St. Thomas More 5 v All Hallows, South Ribble 0 winners play St. Cecilia's, Longridge

St. Cecilia's, Longridge 3 v Baines G.S., Poulton 0 winners play St. Thomas More

### Preston Schools F.A. Competitions

#### Lancashire Shield Quarter-Finals (U-16's)

St. John Fisher 1 v Ribbleton Hall 2 winners play Ashton away

#### Ord Cup (U-15) Quarter Finals

St. Thomas More 6 v Tulketh H.S. 3 winners play William Temple home

William Temple 3 v Parklands 2 winners play Thomas More away

Ashton-on-Ribble 4 v Broughton 2 winners play Campion away

#### Dawson Cup (U-14) Quarter Finals

- sponsored by Black's World Travel

St. Thomas More 4 v St. John Fisher 1 winners play Campion or Longridge away

St. Cuthbert Mayne 2 v Ribbleton Hall 3 winners play Southworth or Broughton home

**Date for Diary:** Wednesday, 10th February, 7-00 p.m.

Lancashire U-15's v Merseyside U-15's at Leyland Motors F.C., Thurston Road, Leyland.

### Deeppdale Finals 30th March

Further sponsors have come forward to support the programme:-

J. J. Cunningham (Football League Linesman)

F. Southern (Preston & District League Committee Member)

J. Gebhard (Landlord, Tom Finney Public House)

P. Mayor (Mayor & Son)

G. T. Weston (George T. Weston, Builders and Contractors)

J. Jeory (Premier Hydraulics)

The committee thank the above sincerely and ask anyone willing to support this event to contact R. M. Clegg (745118/726441).

## NEW CITY TRAVEL CENTRE LTD



# WORLD CUP '82

## SPAIN

YOU CAN NOW BOOK YOUR TRIP TO THE WORLD CUP WITH NEW CITY TRAVEL

BOOKINGS ARE NOW BEING TAKEN

PRICES FROM

# £165.00

INCLUDING MATCH TICKETS  
CLUBS \* GROUPS \* INDIVIDUALS

## CONTACT US NOW

13 Market St., Preston  
Tel: 24521

St. George's Centre, Preston  
Tel: 23525

## PLUNGINGTON CAR PARTS

*for all your Car Requirements*

TOP QUALITY  
SPARES - BRAKES - CLUTCHES  
STEERING PARTS - WATER PUMPS  
BEARINGS  
ALL AT DISCOUNT PRICES

*We are now stockists of*  
**SELTON CLUTCHES**

e.g. Complete clutch for Marina 1.3  
**£21.56 inc. VAT**

80 Plungington Road  
PRESTON  
Phone: 53475



# The Leyland



# The Preston



Week-ending 20 September, 1980

Circulation 119,000 (Group)

# THE PRICELESS ONE

# 165,000 READERS EVERY WEEK

## TED DRAKE

by Geoff Allman

RELATIVELY few Football Club directors have actually played the game professionally. Certainly none has made the impact on the game that present-day Fulham director Ted Drake has, in his playing days he was the personification of the dashing all-action centre forward.

Born in 1912 in Southampton Ted netted a hatfull of goals in his days with Southampton Schoolboys, and as apprentice to the local gasworks he made an impact in their Works team and for Winchester in the Hampshire League.

Keen competition for his signature ensued and Saints just pipped Spurs for this free-scoring teenager. He made a sensational debut near the end of the 1931/2 season, netting a hat-trick and in just over two years at The Dell he chalked up 48 goals in 72 games. He also made several appearances for Hampshire County Cricket Club as a batsman, but from the time when he moved to Arsenal in March 1934 he concentrated on football.

Having just beaten the transfer deadline he proceeded to get seven goals in his first ten games for the 'Gunners' to help them to clinch the 1933/4 First Division Championship. In the following season he set up a new club record of 42 league goals and won the first of his five England caps, netting on his debut in a 3-2 win over Italy.

1935/6 brought an even greater sensation for in a game at Villa Park he made light of having his left knee heavily strapped to score seven goals in a truly remarkable away win. Even his scoring of the winning goal against Sheffield United in the F.A. Cup final of that season tends to be dwarfed by this 7-goal feat.

1947 saw him appointed manager of Reading from where he moved to Chelsea in 1952, leading them to their first-ever League Championship win in 1954/5. Since leaving Stamford Bridge in 1961 he has had a spell as assistant manager to Vic Buckingham in Barcelona.

Throughout his life he has shown the will to win in whatever challenge he has tackled and as he now approaches his seventieth birthday he seems to be on another winner as Fulham make the promotion running in Division Three.

## Quick Quiz

1. Who was the first South American to score the winner in a Wembley FA Cup final?
2. Who was the last Welshman to score in a Wembley FA Cup final?
3. Which club did Wimbledon replace in the League?
4. Who are 'The R's'?
5. Which club did Bill Shankly manage before Liverpool?

Answers:

1. George Robledo (Newcastle, 1952); 2. Noel Kinsey (Birmingham, 1956); 3. Workington; 4. QPR; 5. Huddersfield.



# Thank you...our sponsors

## Individual Players KIT SPONSORS 1981-82

J. C. MOTORS, Maitland Street, Preston -	Boots, Shorts & Shirts Graham Houston Alex Bruce Peter Litchfield
J. L. STORES, Church Street, Preston -	Shorts Steve Elliott
PLUNGINGTON CAR PARTS, Plungington Road, Preston -	Boots Willie Naughton
CHRIS MILLER, Croft Street, Preston -	Boots Tommy Booth
KENYON YATES, Hairstyling for Men, Deepdale Road, Preston	Stockings, Shorts John Anderson Gary Buckley
JOHN DEE, London Supporters Club -	Shorts Jonathan Clark
ADEN STUDIOS, Brook Street, Preston -	Shirt Barry Dunn
TRICENTROL, Wesley Street, Preston -	Shirt Don O'Riordan
ALISON REID, 125 West Park Avenue, Ashton -	Socks Steve Elliott
EDNA & KEITH BORWICK -	Shirt Gordon Coleman
A. J. PARK, East Street, Preston -	Track Suit Andy McAteer
A. & C. PRICE, Carpet Underlay - Luton - (Mr. Tom Price)	Complete Kit Simon Westwell
PNE OFFICIAL SUPPORTERS CLUB -	Socks Alex Bruce
MAUREEN ROBINSON Secretary, PNE Official Supporters Club -	Socks Brian Taylor
SANDY KERRIGAN Treasurer, PNE Official Supporters Club -	Socks Peter Sayer

Any individual or company wishing to sponsor  
part or all of a players kit  
please phone Preston 795156.

## WE NEED YOUR EXTRA SUPPORT NOW!

What's the name of your local pub?  
What's the name of your hosts?  
Does your local sell North End Lottery  
Tickets?

This information could lead to cash  
dividends and Free North End Tickets for  
you, also

can you suggest a local retailer that would sell  
tickets. Send this information together with  
your name and address to Preston North End,  
Commercial Department, Lowthorpe Road,  
Preston.

MITRE MATCHBALL SPONSOR  
for today's game



**Mr. BALDWIN**  
Cat-i'th-Window Farm  
Standish  
Nr. Wigan



# teams

BBC

The Voice  
of Lancashire

96.4 VHF and 351 Medium Wave  
Catch up with ALL the results on  
SPORTS EXTRA 5.30 p.m.

BBC

Radio  
Lancashire

## PRESTON NORTH END

Martin HODGE	1
Simon WESTWELL	2
Andy McATEER	3
Graham BELL	4
Tommy BOOTH	5
Don O'RIORDAN	6
John KELLY	7
Stephen DOYLE	8
Steve ELLIOTT	9
Willie NAUGHTON	10
Alex BRUCE	11
<i>GRAHAM HOUSTON</i>	12

## SWINDON TOWN

Jimmy ALLAN
Charlie HENRY
Kevin BADDELEY
Gary WILLIAMS
Russell LEWIS
Kenny STROUD
Gary EMMANUEL
Roy CARTER
Paul RIDEOUT
Roy GREENWOOD
Howard PRITCHARD
<i>MIKE GRAHAM</i>

REFEREE:  
M. LOWE, Sheffield



Commenced refereeing in Sheffield local leagues in 1958, then through the Central League to the Football League full list in 1972. Was linesman at the 1971 F.A. Amateur Cup Final, a European Cup match in Sweden in 1972 and an Under 21 International in 1979.

A married man, with three children, he is a newsagent and during the summer spends time running to keep fit. Enjoys training and mixing with professional players and feels this liaison has mutual advantages. He carries out work for his local Referee's Association, and is Chairman of Yorkshire Section of the A.F.L.R. & L.

LINESMEN:  
D. R. FARRALL (Red Flag)  
R. R. TURNER (Yellow Flag)



# Stones

## Best Bitter Goes down great!



**NEXT HOME GAMES**  
Central League: v Sheffield Utd.  
Wed. 10th Feb. Kick-off 7 p.m.  
v Everton, Sat. 13th Feb. Kick-off 2 p.m.  
Div. 3 v DONCASTER  
Sat. 20th Feb. Kick-off 3 p.m.